



Controlpro

FULL CONTROL
OF YOUR
SMART HOME



All-in-one package consisting of KNX server, IP router, smart home app and visualisation



18.5" Full HD touch display



Customisable front glass panels



Capable of all Windows and web-based visualisations

Powerful specs

From classic home control to large automation projects with sophisticated SCADA systems – the Controlpro covers a wide range of applications. Coming in three versions, which differ in their equipment based on the required performance, the Controlpro meets the most varied requirements when it comes to building automation. At its core, the control panel is a powerful 18.5-inch control unit based on a full-featured Windows 10 computer. Thus, the Controlpro is not only able to display all building control features at one central location, but can also do this with visualisations from other manufacturers.

The touch panel can easily be used in both private and commercial applications – either in combination with an external server or alone. A KNX interface and the YOUVI Basic software package included make this possible. The Controlpro is clearly more than just an operating device: in addition to the basic building control functions, the Controlpro also supports features for IP telephony, SIP intercoms with video transmission and other Windows features, such as night mode and control via touch gestures. Thanks to fanless cooling, the device operates completely silently.

The Controlpro is made of industrial components and high-quality materials, including a Full HD display with capacitive touchscreen, 5 megapixel camera

and wideband speaker. With Windows 10 IoT Enterprise LTSC, a current operating system is already preinstalled.

Smart software

The YOUVI Basic visualisation is already included in the scope of supply for the Controlpro. With this software, you can conveniently and centrally control the (RGBW) light, blinds, temperature or ventilation – simply via your customisable dashboard on the touch panel or via the app.

Thanks to the intuitive interface, all features are easily accessible and you hardly need any navigation. Furthermore, you can access any websites you like via YOUVI and integrate them into the user interface. There you can view news or building control parameters that are available via the web, depending on your taste. You can also keep an eye on all the energy flows in the building via a special widget. This way, you always know what is currently being consumed in the building, how much electricity the solar system is generating, and how much energy is required from the power grid.

YOUVI Basic can be expanded as required with various add-ons. The logic module makes many manual operations superfluous. Save morning and evening routines and have these played out automatically. Or create alert functions, simulations of someone being at home and individual scenes. Additional add-ons allow you to use

more features: from video surveillance with IP cameras to door communication to controlling your smart home via voice command or with the app on the go. The music player for Sonos or trivium can be used to realise a multi-room control system that turns the Controlpro into a comprehensive multimedia device.

Capable of further visualisations

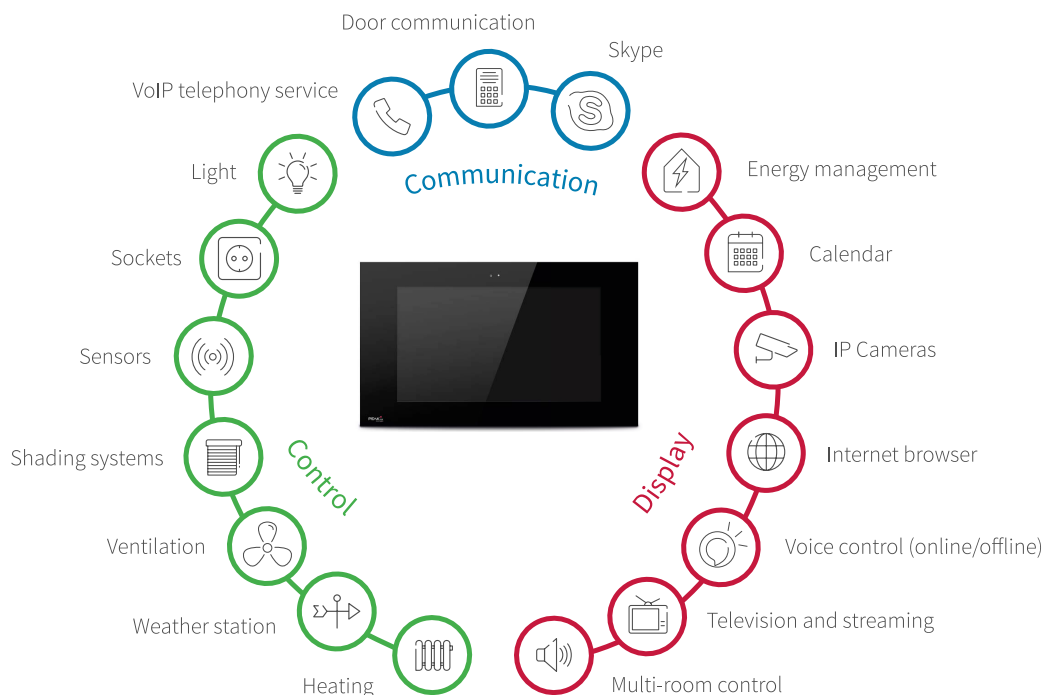
Furthermore, other visualisations running as a web application or Windows client on the Controlpro can easily be used. A large selection is available, such as EisBär, CubeVision, Edomi or visualisations of the Gira Home Server or X1. This allows you to expand the features of the panel based on your individual requirements.

Convenient assembly

Mount the Controlpro either in a mounting box – as an option, even flush-mounted with the wall – or install it as a replacement device in the mounting boxes of the Gira Control 19 or Server-Client 15.

Timeless design

The front glass panel is available in black or white as standard. In addition, you can customise a glass panel in your preferred colour or create your own design. All glass versions are also available without our logo.



YOUVI

A visualisation in which even new users can quickly and intuitively find their way around. The interface, with its smart design, shows you everything you need for uncomplicated building control.

Use the room buttons to go directly to your desired room and control groups of lights, shutters and more without having to navigate a lot.

Always keep an overview with integrated streams from your surveillance cameras.

Take advantage of the clear navigation bar, which is divided into trades, floors and a custom dashboard.

In addition to controlling roller shutters, blinds, (RGBW) dimmers, lights, switches and heaters, you can also easily integrate the weather station.

A very wide variety of sensors are supported, e.g., for brightness, humidity and wind speed, as well as binary sensors for window and door contacts.



Ventilation systems are clearly presented and make it easier to control your indoor air quality.

Each tile can be displayed in two different sizes.

Always have a live view of how much energy is being consumed or recovered.



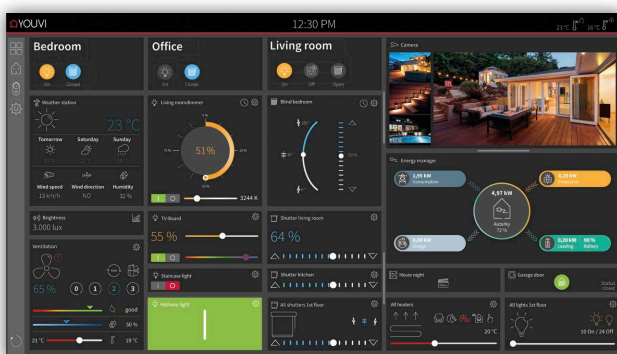
Automatic setup via ETS import feature



iOS or Android app included



Dashboard can be freely edited via drag and drop



Dark mode

Do you prefer darker designs? Then simply switch to dark mode. The dark theme not only looks very classy, it also protects your eyes in dark environments.

THE YOUVI ADD-ON PRINCIPLE

With the YOUVI add-ons, we offer you exactly the features you need. YOUVI Basic covers the most common building control tasks. The additional add-ons make it possible to expand the functionality as required. This gives you a building control system that is precisely tailored to you. The add-ons need only be purchased once per building setup.



visualisation

For an easy control of lights, dimmers, RGB(W) luminaires, shading, heating, sockets and ventilation systems. Available in English, French and German.



Bus monitor

For quick troubleshooting on the KNX bus.



IP router

For connecting to the KNX network without extra hardware.



Connect module

For control via voice command (online or offline) or with the YOUVI app on the go.

Optional



Camera module

For connecting surveillance cameras.

Optional



Logic module

For easily creating if-then routines.

Optional



Door station module

For simple video door communication in the best sound quality.

Optional



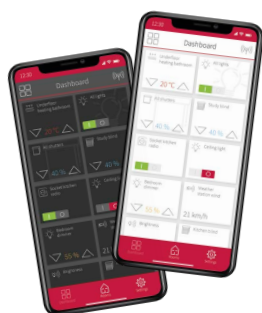
Device bridges

For integrating devices outside the KNX standard.

Optional

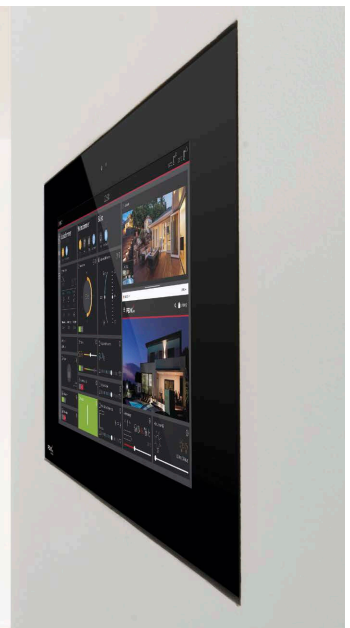
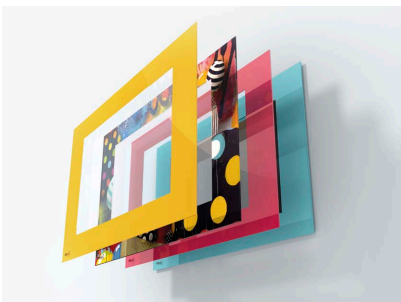
YOUVI BASIC

ADD-ONS



Control your home comfortably with the YOUVI mobile app. This is available free of charge for Android and iOS smartphones and for use in your own home network. The app is available in a light and dark design.

PEAK_{NX}
control pro



AT A GLANCE

Technical specifications

Specs

- Intel dual- or quad-core processor
- 250 or 500 GB SSD hard disk space
- 4, 8 or 16 GB DDR4 RAM
- 18.5" Full HD LED LCD panel
- Multi-touch thanks to PCAP Touch technology
- 5 megapixel camera
- Wideband stereo speaker
- Optimised microphone
- Fanless cooling by convection

Software

- Operating system: Windows 10 IoT Enterprise LTSC
- YOUVI Basic software package consisting of visualisation, IP router and bus monitor (modules and bridges can be purchased in addition)

Connections

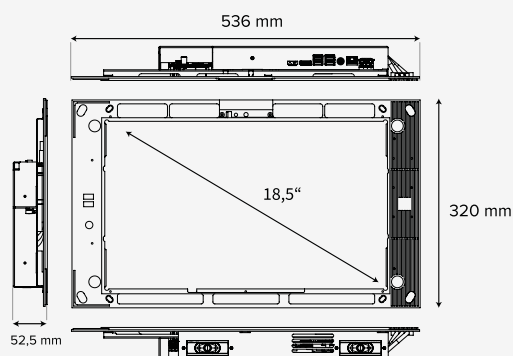
- 1 x KNX
- 4x USB 2.0 (2 x front connections)
- 1 x HDMI V 1.4
- 1 x DP V1.2
- 2x USB 3.1 Gen1
- 1 x LAN (1 GBit)
- 1 x line-in, 1 x line-out
- 1 x PS/2

Supply and consumption

- Supply voltage: 19-24 V DC (power supply for mounting box and DIN rail available)
- Max. power requirement: in operation: 3 A, PC booting: 3.5 A
- Average consumption: 44 W
- Standby operation: 1.5 W

Dimensions

- Mounting box, WxHxD: 528x312x65 mm
- Front glass, WxHxD: 560x330x1.8 mm



Compatibility

Visualisations

All Windows or web-based, such as:

- Alexander Maier GmbH: EisBär SCADA
- BabTechnologie: CubeVison
- Gira: QuadClient, Ajax, X1
- Hager: Domovea
- Symcon GmbH: IP Symcon
- Edomi, openHAB, ThinKnx and many more...

Mounting boxes

- Gira Control 19 & ServerClient 15

Cameras

IP streams in RTSP, JPG and MJPG format, e.g., from:

- Hikvision
- Axis
- Lupus
- Mobotix, and many more...

Door communication

All SIP-enabled door communication systems, e.g.:

- Gira DCS, incl. DCS-IP Gateway (in conjunction along with Gira software)
- DoorBird IP video door station
- AGFEO IP Video TFE door intercom system
- Wantec Monolith C IP
- Mobotix T25, and many more...

ETS

- ETS Inside server

Music software

Windows or web-based software:

- Apple iTunes, Spotify, Sonos, and many more...

- High-quality touch panel with industrial components
- Reliable, silent operation
- Including YOUVI Basic software package for KNX bus control, consisting of visualisation, IP router and bus monitor
- No need for external servers thanks to KNX connection and software
- Compatible with many other visualisations, SIP door stations and mounting boxes
- Hassle-free, judder-free display of surveillance cameras and other multimedia applications
- Interchangeable front glass panels with customised designs